

|| M M ||



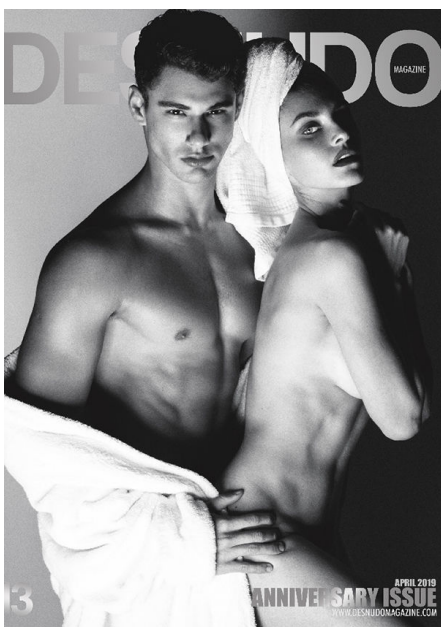
GABRIEL RICCIERE

height: 187 / 6'2 **bust:** 98 / 38 **waist:** 79 / 31"

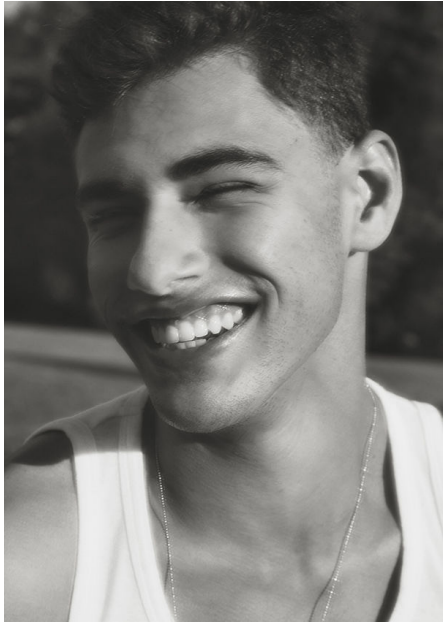
hips: 98 / 38" **hair:** brown **eyes:** brown **shoes:** EU-43 US-10



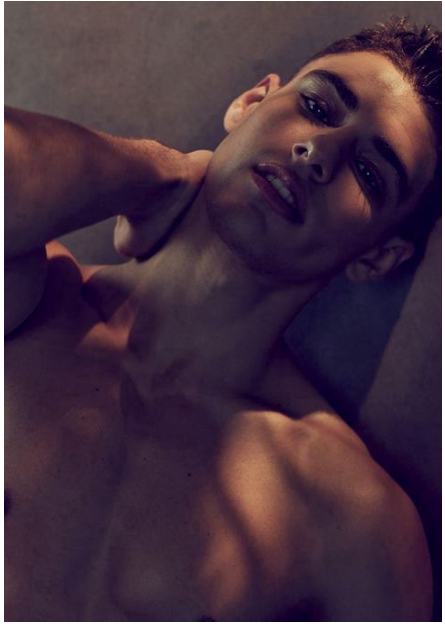
INTERNATIONAL MODEL MANAGEMENT
36, rue Jourdan | 1060 Bruxelles | Belgium
+32 2 537 26 86 | booking@immbruxelles.com | www.immbruxelles.com



INTERNATIONAL MODEL MANAGEMENT
36, rue Jourdan | 1060 Bruxelles | Belgium
+32 2 537 26 86 | booking@immbruxelles.com | www.immbruxelles.com



INTERNATIONAL MODEL MANAGEMENT
36, rue Jourdan | 1060 Bruxelles | Belgium
+32 2 537 26 86 | booking@immbruxelles.com | www.immbruxelles.com



INTERNATIONAL MODEL MANAGEMENT
36, rue Jourdan | 1060 Bruxelles | Belgium
+32 2 537 26 86 | booking@immbruxelles.com | www.immbruxelles.com



INTERNATIONAL MODEL MANAGEMENT
36, rue Jourdan | 1060 Bruxelles | Belgium
+32 2 537 26 86 | booking@immbruxelles.com | www.immbruxelles.com



INTERNATIONAL MODEL MANAGEMENT
36, rue Jourdan | 1060 Bruxelles | Belgium
+32 2 537 26 86 | booking@immbruxelles.com | www.immbruxelles.com



dafiti
.com.co

INTERNATIONAL MODEL MANAGEMENT
36, rue Jourdan | 1060 Bruxelles | Belgium
+32 2 537 26 86 | booking@immbruxelles.com | www.immbruxelles.com



INTERNATIONAL MODEL MANAGEMENT
36, rue Jourdan | 1060 Bruxelles | Belgium
+32 2 537 26 86 | booking@immbruxelles.com | www.immbruxelles.com



INTERNATIONAL MODEL MANAGEMENT
36, rue Jourdan | 1060 Bruxelles | Belgium
+32 2 537 26 86 | booking@immbruxelles.com | www.immbruxelles.com



INTERNATIONAL MODEL MANAGEMENT
36, rue Jourdan | 1060 Bruxelles | Belgium
+32 2 537 26 86 | booking@immb Bruxelles.com | www.immb Bruxelles.com