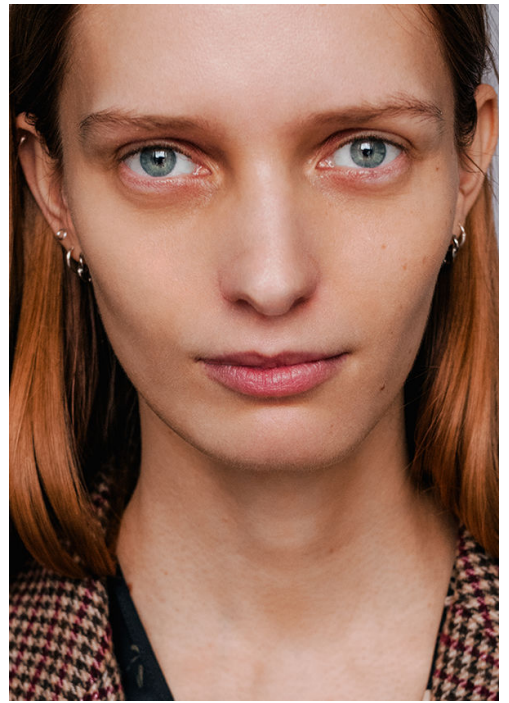


|| M M ||



MARTHE

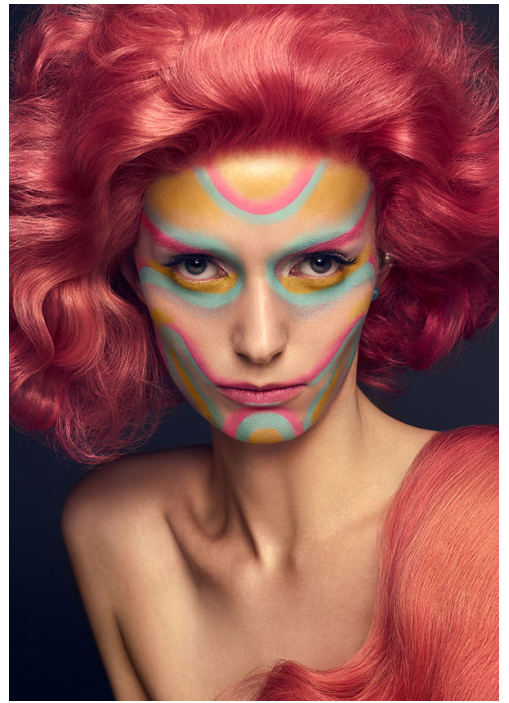
height: 180 / 5'11 **bust:** 80 / 31 C **waist:** 60 / 23"
hips: 90 / 35" **hair:** blond **eyes:** green **shoes:** EU-40 US-7





Forever 高级高级珠宝系列白色 18K 金镶钻石项链、耳环 BVLGARI 宝格丽
高级珠宝系列 Evening
白色胸衣 Marni
棕色芭蕾舞鞋 Dior







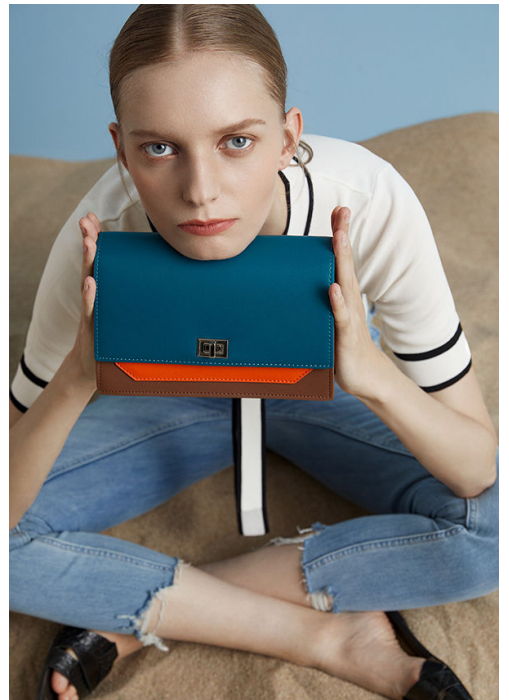
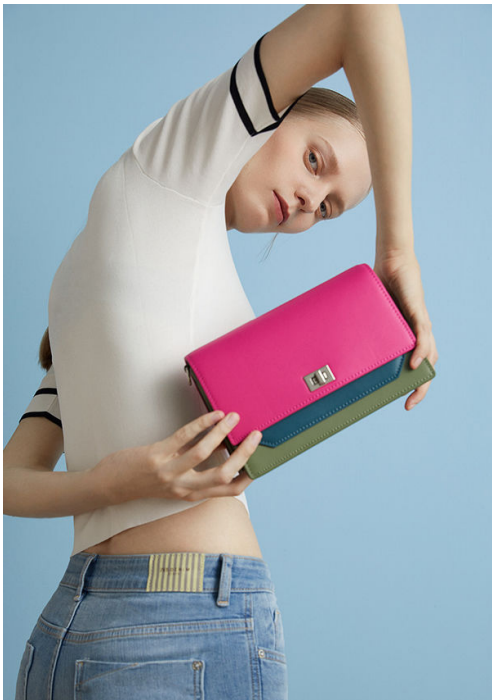


CHOE 丝质流苏裙
金属项链手链
金属戒指 金属手镯

喀什丝质露肩上衣 金属项链 金属手环



CHOE 半袖针织衫
丝质上衣 附赠腰带包袋
金属项链



HO WE
ELONG

88

Major

L'Officiel



Vintage Japanese Kimono worn by all three models, DOA TERRAZZO SINGAPORE.





Styler en accessoires: Inès de la Fressange
ALIAIA, presento per INDIVIDUALI, in collaborazione con SCHIAPPELLO PASTORINI

