

|| M M ||



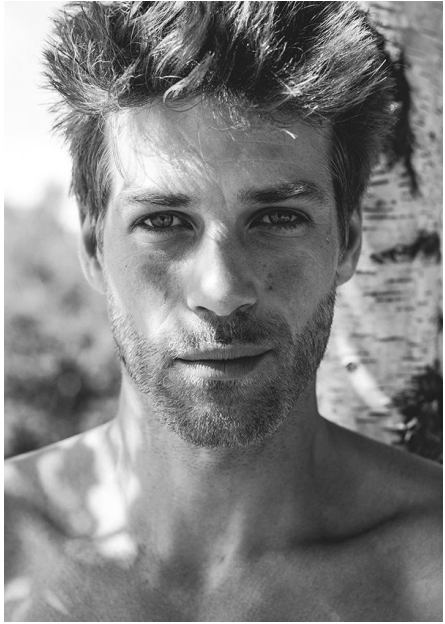
JULIAN SCHALK

height: 184 / 6'0 **bust:** 97 / 38 **waist:** 76 / 29"

hair: dark-blonde **eyes:** blue **shoes:** EU-43 US-10



INTERNATIONAL MODEL MANAGEMENT
36, rue Jourdan | 1060 Bruxelles | Belgium
+32 2 537 26 86 | booking@immb Bruxelles.com | www.immb Bruxelles.com



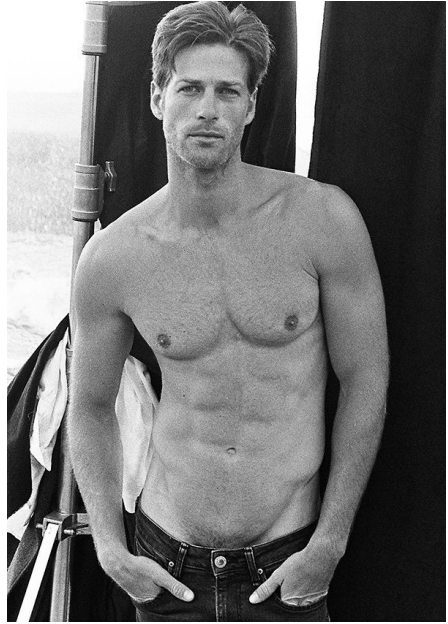
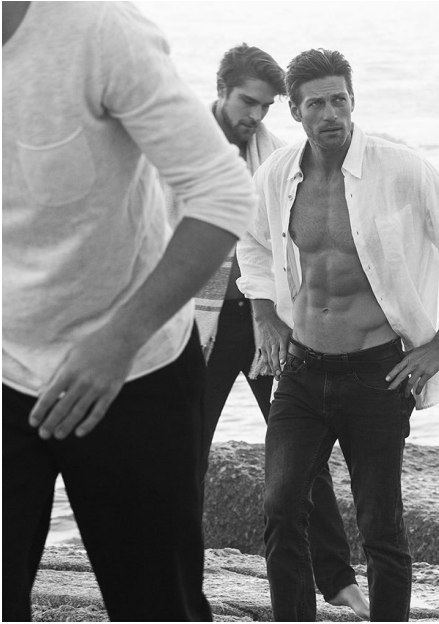
INTERNATIONAL MODEL MANAGEMENT
36, rue Jourdan | 1060 Bruxelles | Belgium
+32 2 537 26 86 | booking@immbruxelles.com | www.immbruxelles.com



INTERNATIONAL MODEL MANAGEMENT
36, rue Jourdan | 1060 Bruxelles | Belgium
+32 2 537 26 86 | booking@immbruxelles.com | www.immbruxelles.com



INTERNATIONAL MODEL MANAGEMENT
36, rue Jourdan | 1060 Bruxelles | Belgium
+32 2 537 26 86 | booking@immbruxelles.com | www.immbruxelles.com



INTERNATIONAL MODEL MANAGEMENT
36, rue Jourdan | 1060 Bruxelles | Belgium
+32 2 537 26 86 | booking@immbruxelles.com | www.immbruxelles.com



The Collar of Money

On matching your shirt to your face, to get the right look, there are several rules to mark you out as a man to watch.

KEEP IT IN HAND

The subway hat – or the hat in hand as it's more properly known – is your absolute way to look like it's yours, slightly symmetrical and worn best with slimmer fits. Make the top part of your chosen standard collar and single-breasted suit.

NICE DIMPLES

Creating a dimple in the middle of the tie, just below the knot, is a style master's detail. Stick your index finger up into the knot from the front as you tighten to help mould the cloth. Don't allow the edges to curl back, though – that marks of confidence.

TO THE POINT

The tip of your tie should just touch your waistband. If it doesn't start again – good! Look like an overgrown schoolboy if it's halfway up your torso. Above the belt, it's just an ornament to your cloth. Which could have its advantages.

KNOW TO SELF

Your tie knot should always conceal the collar/knot tie. To ensure your knot sits flush in the collar, momentarily generate pressure with the tie, then dig your forefinger between the collar and your shirt's apple to loosen the tie considerably.

FACE VALUE

Finger hairs reveal face age for pointed collars: their straight lines help give the illusion of a more defined line. For those with particularly narrow faces, a rounded crew collar can help soften deep angles and make your face appear fuller.

THE TIE CLIP

Spand 588 is the tie clip of the future, the humble tie clip has enjoyed a resurgence. Such accessories allow you to show a bit of your personality, says Spand. Not only does it add a finishing touch, but it keeps your tie from doing a long day's work. Stylish and practical, you can use the metal of the tie clip to match your cufflinks and watch.

112 0804 121201 021 8100
 © CALVIN KLEIN.COM © 2014
 112 0804 121210
 © CALVIN KLEIN.COM © 2014
 112 0804 121211
 © CALVIN KLEIN.COM © 2014
 112 0804 121212
 © CALVIN KLEIN.COM © 2014

14 | www.immbruxelles.com | www.immbruxelles.com

ADDLE UP

OUR BETS ON THE LOOK OF THE
 WITH OUR FIELD OF KEY SUITING
 FOR THE SPRING RACING CARNIVAL

FRANZ
 BY BEN BULLIVANT, RICHARD ROSTEMER
 DA LINDSAY
 HELEN DOWLEY

COLOUR

"Coloured suits are a good fit for the horse racing crowd, where you want to splash," says Matthew Keighan, director of menswear. That means looking like the fifth. It's a collection of men's lounge wear colours – beige, cream, tan – are coming through the way for holiday options. It's deep red and shades of teal to cobalt, but keep it and tie relatively simple.

ALYX TARDI (SUIT) JACKET T 8200 W
 5 8100
 SHIRT (SUIT) T 8200 W
 TIE 8100

INTERNATIONAL MODEL MANAGEMENT
 36, rue Jourdan | 1060 Bruxelles | Belgium

+32 2 537 26 86 | booking@immbruxelles.com | www.immbruxelles.com



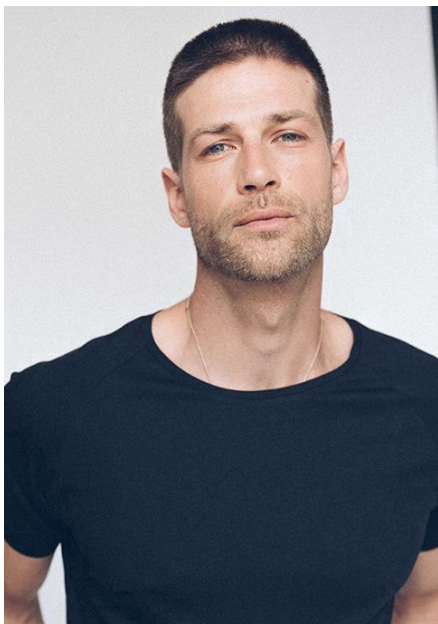
INTERNATIONAL MODEL MANAGEMENT
36, rue Jourdan | 1060 Bruxelles | Belgium
+32 2 537 26 86 | booking@immbruxelles.com | www.immbruxelles.com



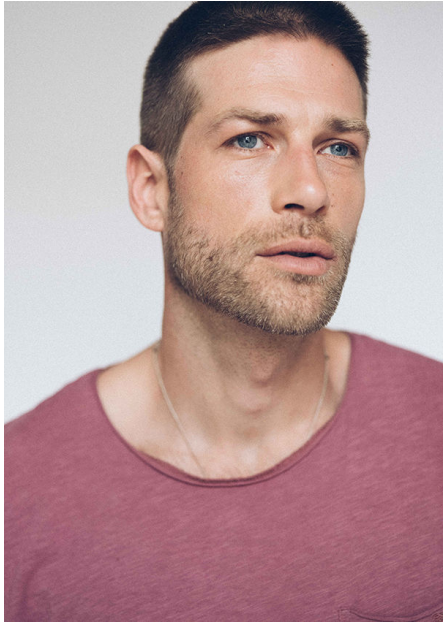
INTERNATIONAL MODEL MANAGEMENT
36, rue Jourdan | 1060 Bruxelles | Belgium
+32 2 537 26 86 | booking@immbruxelles.com | www.immbruxelles.com



INTERNATIONAL MODEL MANAGEMENT
36, rue Jourdan | 1060 Bruxelles | Belgium
+32 2 537 26 86 | booking@immbruxelles.com | www.immbruxelles.com



INTERNATIONAL MODEL MANAGEMENT
36, rue Jourdan | 1060 Bruxelles | Belgium
+32 2 537 26 86 | booking@immbruxelles.com | www.immbruxelles.com



INTERNATIONAL MODEL MANAGEMENT
36, rue Jourdan | 1060 Bruxelles | Belgium
+32 2 537 26 86 | booking@immbruxelles.com | www.immbruxelles.com



INTERNATIONAL MODEL MANAGEMENT
36, rue Jourdan | 1060 Bruxelles | Belgium
+32 2 537 26 86 | booking@immb Bruxelles.com | www.immb Bruxelles.com